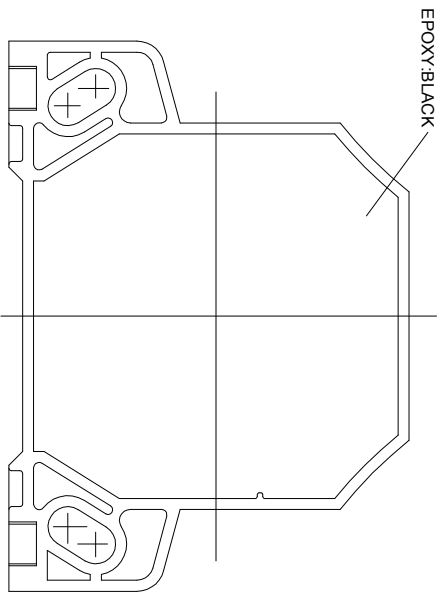
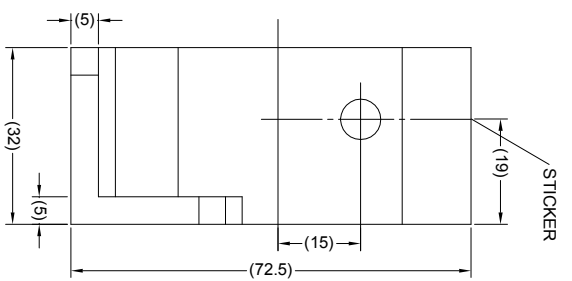
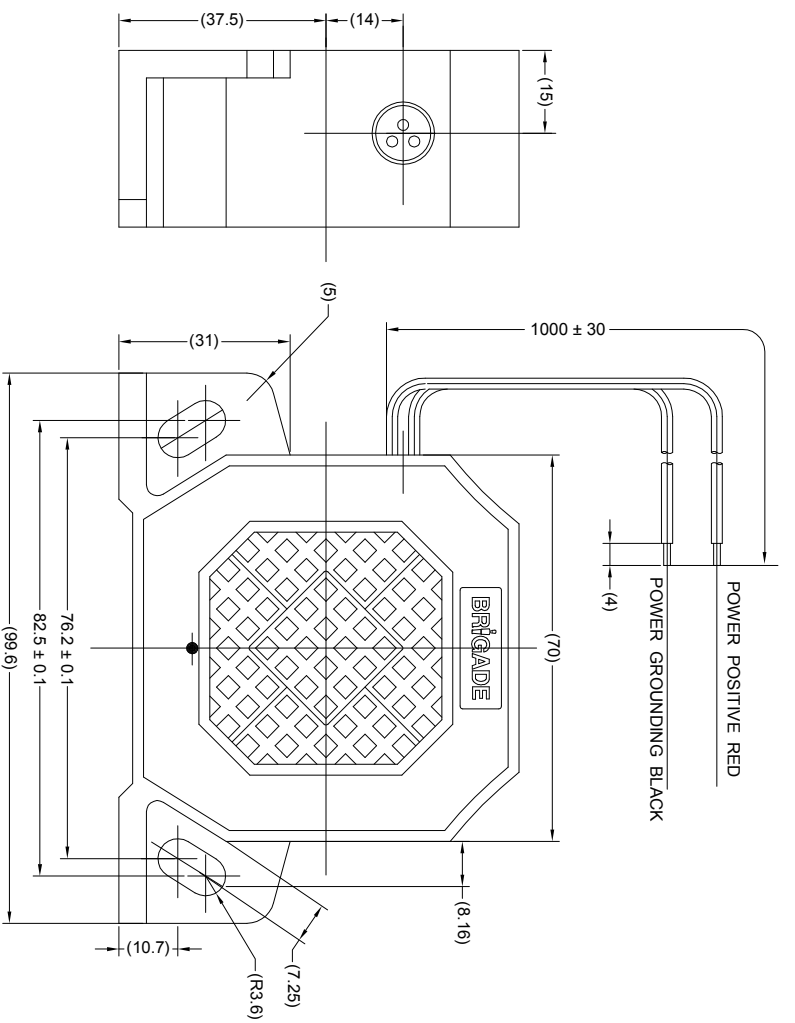


Revision Notes			
R1 - NOTES UPDATED TO INCLUDE LABEL DETAILS AS PER ECR CR-4274.			
APR: KILDA	Drawn/BATES	Checked/M/BUTLER	Approved/G/SLITH
			Date: 28/08/14



- SPECIFICATION:**
1. RATED VOLTAGE: 12-24 VOLTS DIRECT CURRENT (WORKING VOLTAGE RANGE 9-32 VOLTS)
 2. RATED CURRENT: 0.2 AMPERES OR LESS.
 3. SOUND PRESSURE: SELF-ADJUSTING 82-102±4dB(A) (MINIMUM OF 5dB(A) ABOVE SENSED AMBIENT NOISE)
 4. TONE FREQUENCIES: 1400±200Hz AT TEST VOLTAGES OF 14 ~ 28 VOLTS
 5. PULSATIONS: 80±10 CYCLES PER MINUTE AT TEST VOLTAGES OF 14 ~ 28 VOLTS.
 6. DURABILITY: CONSECUTIVE 500 HOURS AT TEST VOLTAGE OF 28 VOLTS.
 7. SURGE VOLTAGE TEST: TO BE ABNORMALITY-FREE AS TESTED SUBJECT TO ISO7637 ITEM 3a,3b,5.
 8. RANGE OF OPERATING TEMPERATURE GUARANTEED: -40°C ~ 85°C
 9. ENVIRONMENTAL TESTS PER SAE J994.

- NOTES:**
1. FOR PRODUCT LABEL REFER TO LATEST REVISION OF DRAWING BE-002833-XX-14.
 2. FOR GIFTBOX LABEL REFER TO LATEST REVISION OF DRAWING BE-002834-XX-14.
 3. 'R' TRIANGLE INDICATES CHANGES MADE TO REVISION OF DRAWING AS IDENTIFIED IN REVISION NOTES.

PROPRIETARY NOTICE
 THIS DESIGN AND TECHNICAL INFORMATION APPEARING ON THIS DRAWING IS THE PROPERTY OF BRIGADE ELECTRONICS, AND IS DISCLOSED IN CONFIDENCE. IT IS NOT TO BE COPIED, REPRODUCED, REVEALED TO OR EXPLOITED BY OTHERS, EITHER IN WHOLE OR IN PART WITHOUT THE EXPRESS WRITTEN CONSENT OF BRIGADE ELECTRONICS.



 Angle of Projection Third Angle	Assembly Pl Approval		Approved by		Checked by		Drawn by		
	DKERAL		DKERAL		DKERAL		DKERAL		
	Units	Scale	Released	Assembly Ref	Status				
	mm	N/A	00/00/00	-	RELEASED	SA-400			
	Part No	BE-000308-01-06							
	#1310								